

SPECIFICATIONS

LIVING/DINING

- Flooring** Vitrified tiles
- Wall** Putty (ready to paint)
- Ceiling** Putty (ready to paint)
- Main Door** Sal wood frame with flush door & electronic locks for main door
- Internal Doors** Sal wood frame with flush door
- Windows/Glazing** UPVC/aluminium windows (openable & fixed combinations)
- Electrical** Modular switches with copper wiring (Schneider/Havells/Anchor or of equivalent make)
- Air-conditioning** Provision of space for outdoor unit for split AC along with drainage pipe. AC copper wiring and cabling at extra cost will be placed as per provision
- Distribution Board** Reputed make

BEDROOMS

- Flooring** Vitrified tiles
- Wall** Putty (ready to paint)
- Ceiling** Putty (ready to paint)
- Internal Doors** Sal wood frame with flush door
- Windows/Glazing** UPVC/aluminium windows (openable & fixed combinations)
- Electrical** Modular switches with copper wiring (Schneider/Havells/Anchor or of equivalent make)
- Air-conditioning** Provision of space for outdoor unit for split AC along with drainage pipe. Split AC at extra cost will be placed as per provision. AC copper wiring and cabling at extra cost will be placed as per provision

BALCONY

- Flooring** Vitrified tiles
- Wall** Putty (ready to paint)
- Ceiling** Putty (ready to paint)
- Door** UPVC/powder-coated aluminium type sliding doors with glass
- Railing** Glass designed to match exterior elevation

KITCHEN

- Flooring** Anti-skid ceramic tiles
- Wall** Ceramic tiles up to 2 ft height above the counter
- Ceiling** Putty (ready to paint)
- Windows/Glazing** Aluminium windows (openable & fixed combinations)
- Counter** Granite slab
- Electrical** Modular switches with copper wiring (Schneider/Havells/Anchor or of equivalent make)

TOILETS

- Flooring** Anti-skid ceramic tiles
- Wall** Ceramic tiles up to lintel height
- Ceiling** Wall putty (ready to paint)
- Door** Sal wood frame with flush door
- Windows/Glazing** Aluminium windows (openable & fix combination)
- Sanitaryware** Kohler/Roca/Hindware/Parryware (white) switches with copper wiring or of equivalent make
- CP Fittings** Jaquar/Kohler or of equivalent make

UTILITY

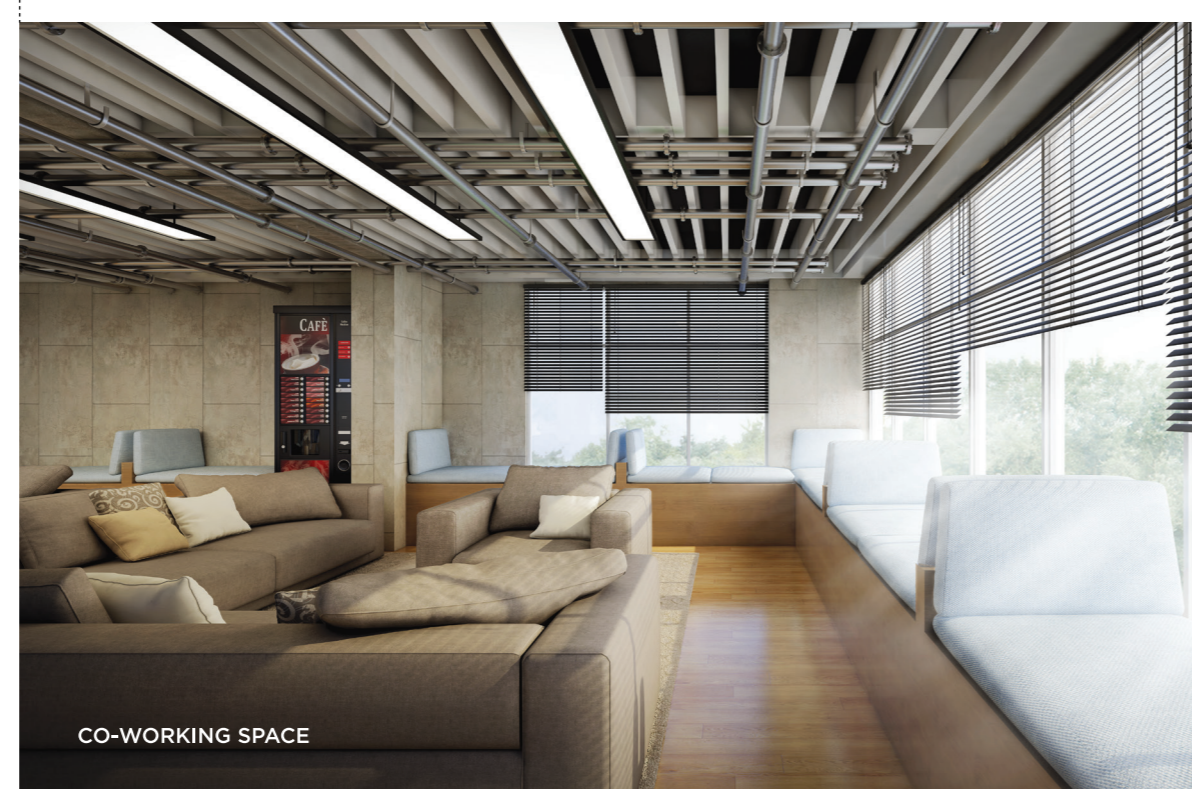
- Ground Floor Lobby**
- Flooring** Imported marble
- Wall** Tiles/imported marbles/paints with wall panelling
- Ceiling** False ceiling with lights
- Typical Floor Lobby**
- Flooring** Vitrified tiles
- Wall** Tiles & paint combination
- Ceiling** False ceiling
- Stair** Kota stone

GRID POWER & BACKUP POWER

- 100% power back-up for common areas and utility areas

LIFTS

- OTIS/Schindler/Kone or equivalent to Automatic Rescue Device (ARD)



CO-WORKING SPACE

AMENITIES

INDOOR

- Mini-theatre
- Gymnasium
- Yoga Room
- Games Room
- Squash Court
- Toddlers' Zone
- Co-working Space
- Steam & Sauna
- Community Hall
- Play Station Zone

OUTDOOR

- Landscaped Garden at the Podium
- Adda Zone & Gazebo
- Swimming Pool
- Children's Play Area
- Badminton Court

OTHER FEATURES

FIRE SAFETY & SECURITY

- Analogue addressable type fire detection & alarm system
- Fire panel for the complete complex & pin-pointed addressing system
- Photoelectric smoke detector
- Sprinkler system & fire hose
- CCTV camera
- Boom barrier

GREEN HOMES

- Organic waste composter
- Water-efficient fixtures
- Rainwater harvesting
- Ground water recharge pits
- Water treatment plant
- Sewage treatment plant

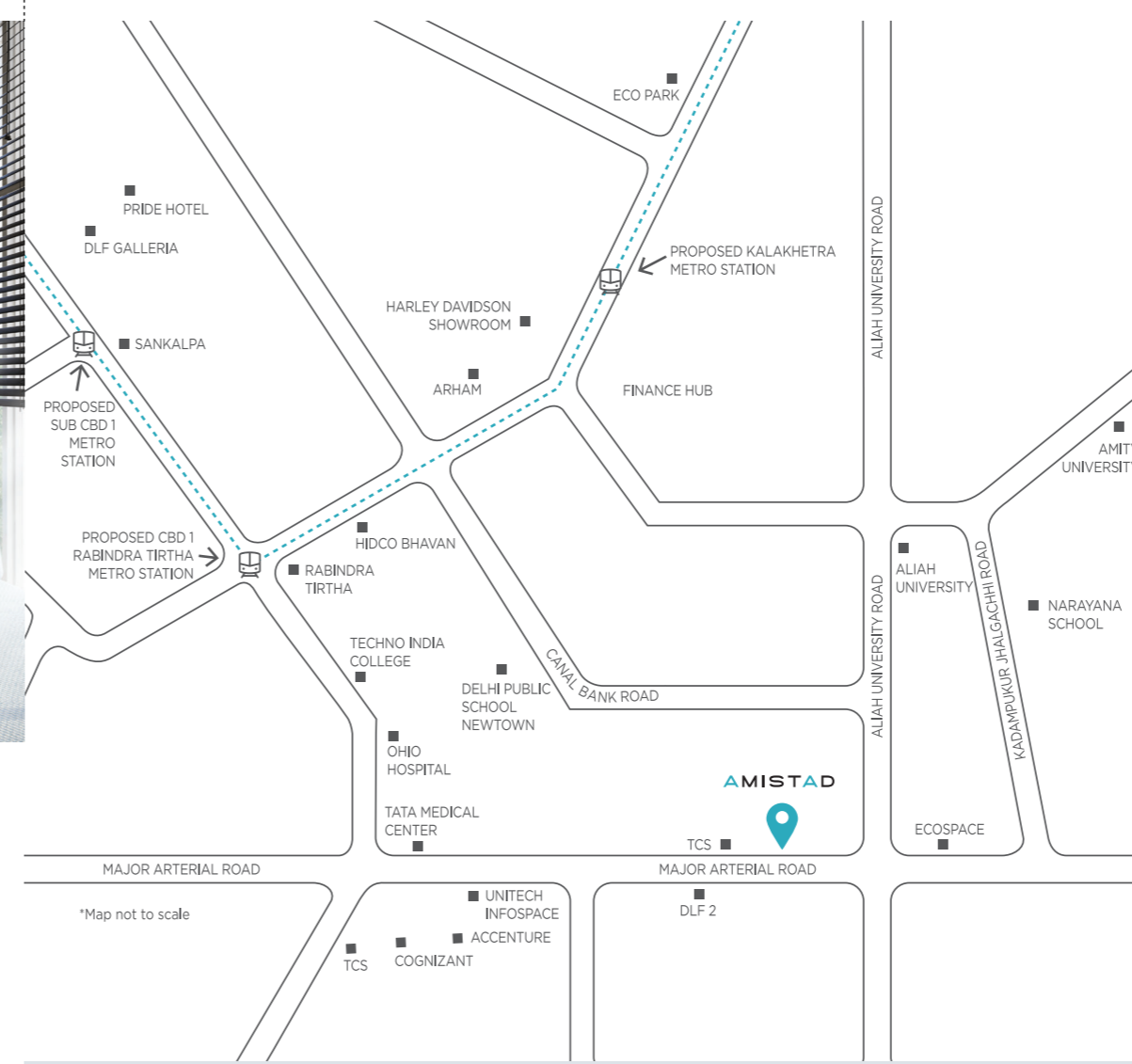
- Water meter monitoring at ground level
- Recycled water for gardening
- Dual flushing system

HOME AUTOMATION

- Wi-Fi facility within complex
- Intercom facilities
- Electronic locks for the main door

OCCUPATIONAL HEALTH & COMFORT

- Low VOC paints in common areas
- Fully air-conditioned ground floor lobby
- Chlorine-free swimming pool
- Wheelchair ramp all the way to lobby



EDUCATION

- The Newtown School 2 km
- DPS Newtown 4 km

ENTERTAINMENT

- CC2 - Newtown 8.9 km
- Axis Mall 4.9 km

HEALTHCARE

- Tata Medical Center 1.3 km
- OHIO Hospital 2.5 km

COMMUTE

- Newtown Bus Terminus 4.3 km
- Airport 11.9 km

SITE ADDRESS

Newtown, Action Area II, Chakpachuria, Beside TCS Gitanjali Park
Kolkata 700156

Approved by Leading Financial Institutions

Developers:



3 Decades | 120+ completed projects | 30 projects underway | Over 10,000 happy residents



PS SALES GALLERY

1002, EM Bypass, Kolkata 700105

Visit our sales gallery from Monday to Saturday between 10 am - 6 pm

Follow us on [f](#) [in](#) [v](#)



Reserve a visit to the Experience Centre

Call PS Sales **6767 6767** or your preferred channel partner



AMISTAD
LIFE FOR THE LIKE-MINDED

www.psgroup.in



Disclaimer: Images are artist's expression and are for illustrative purpose only. For detailed disclaimer, visit www.psgroup.in. For any feedback/suggestions please mail us at feedback@psgroup.in



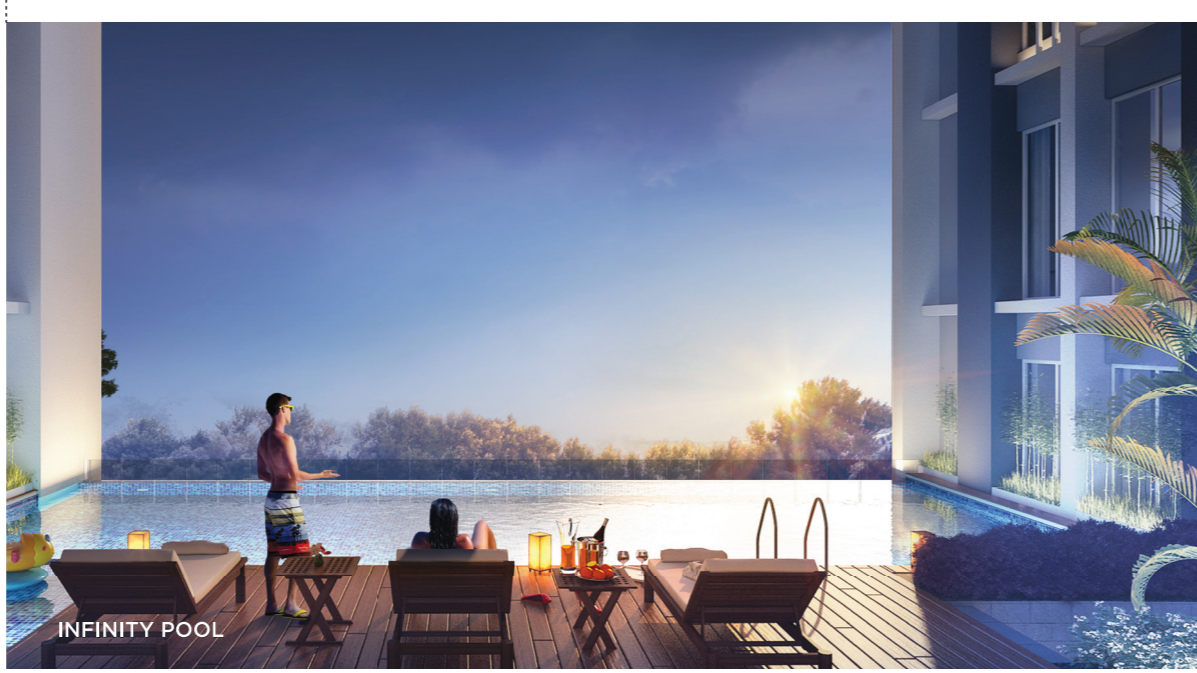
CHILDREN'S PLAY AREA

AMISTAD

From Old Spanish, *Amistad* (n) friendship

Life is great, when you have good people around. The kind of people who work alike, think alike, and play alike! Amistad gives you an opportunity to share your life with those who live alike!

Perfectly located within a stone-throw distance from the renowned IT hubs of Kolkata, Amistad is a home of comfort defined by sharing and caring. It offers you the essence of urban living surrounded by amiable environment.



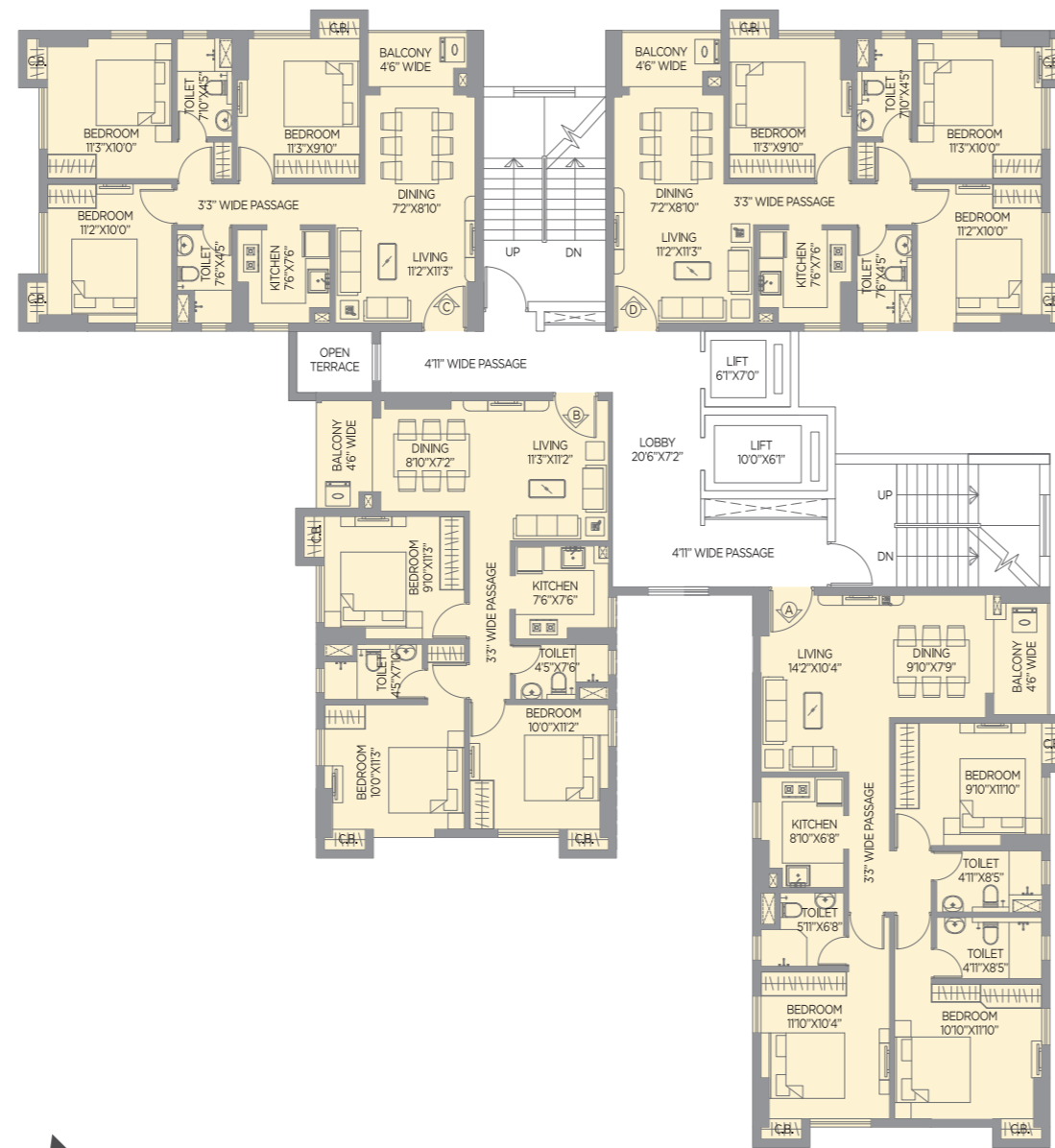
SITE PLAN



LEGENDS

- 1. Gate
- 2. Arrival Plaza
- 3. Arrival Garden
- 4. Arrival Garden Corner Sit-out
- 5. Reflexology Garden
- 6. Multilevel Car Parking
- 7. Open Air Theatre
- 8. Senior Citizens' Corner
- 9. Community Lawn
- 10. Parking
- 11. Jogging Track
- 12. Internal Road
- 13. Pathway
- 14. Green Pocket
- 15. Kids' Play Area
- 16. Tot Lot
- 17. Infinity Swimming Pool
- 18. Kids' Pool
- 19. Wooden Deck
- 20. Entry to Terrace
- 21. Lawn
- 22. Badminton Court

FLOOR PLANS



BLOCK 1

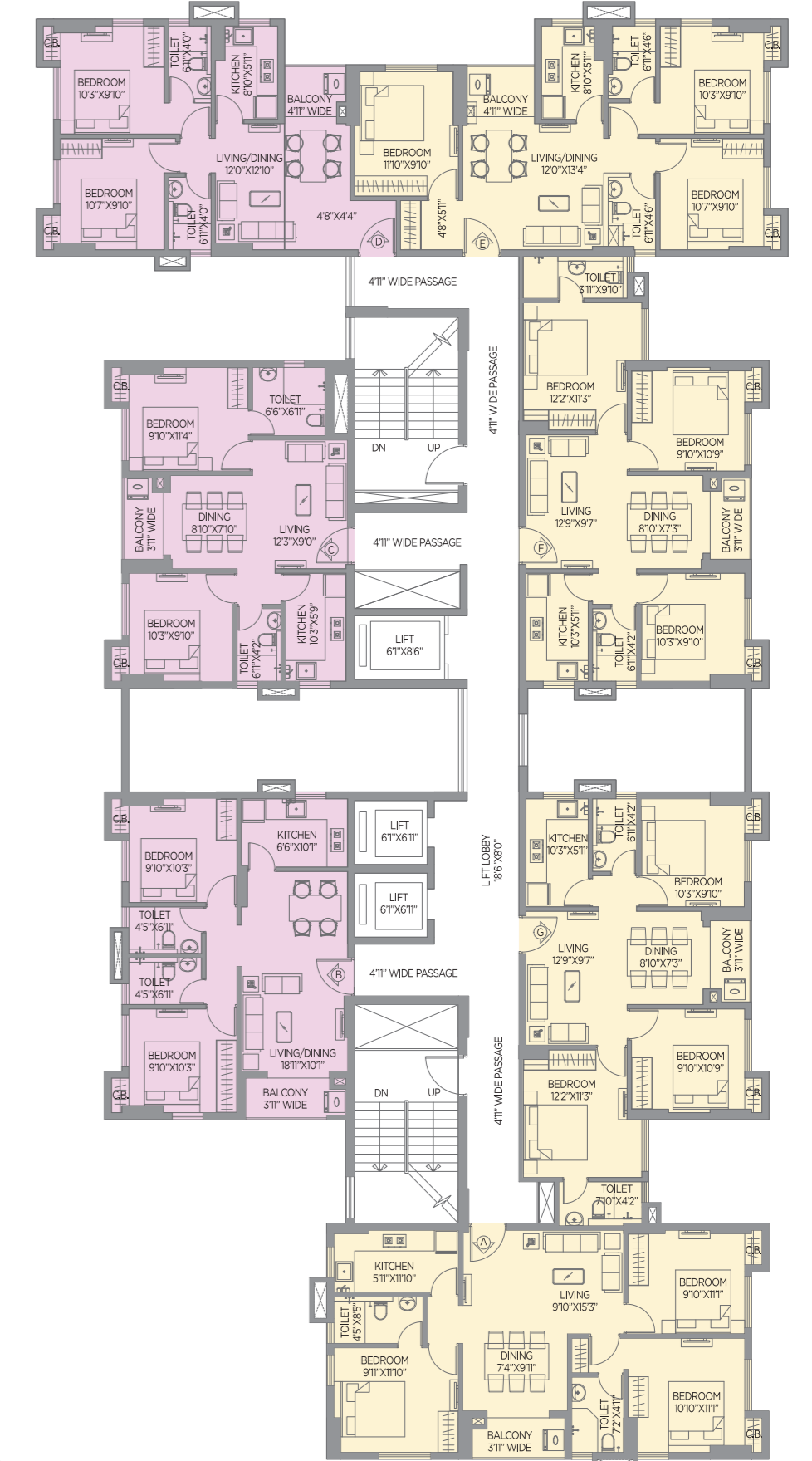
Floor	Type of Apartment	Type of BHK	Carpet Area (sq.ft.)	Balcony Area (sq.ft.)	Built-up Area (sq.ft.)	Terrace Area (sq.ft.)	Chargeable Area (sq.ft.)
3rd	A	3BHK	903	41	1,056	419	1,802
	B	3BHK	741	39	878	886	2,036
	C	3BHK	742	36	883		1,156
	D	3BHK	744	36	883	187	1,343
Typical	A	3BHK	903	41	1,056		1,383
4th to 18th	A	3BHK	741	39	878		1,150
	B	3BHK	742	36	883		1,156
	D	3BHK	744	36	883		1,156

All areas as per RERA - REAL ESTATE (REGULATION AND DEVELOPMENT) ACT



BLOCK 2

Floor	Type of Apartment	Type of BHK	Carpet Area (sq.ft.)	Balcony Area (sq.ft.)	Built-up Area (sq.ft.)	Chargeable Area (sq.ft.)
3rd	A	3BHK	929	40	1,076	1,409
	B	2BHK	607	29	713	934
	C	3BHK	929	40	1,079	1,413
Typical	A	3BHK	929	40	1,075	1,407
4th to 17th	B	2BHK	607	29	713	934
	C	3BHK	929	40	1,076	1,409
	D	3BHK	777	37	918	1,202
	E	3BHK	780	37	923	1,208



BLOCK 3

Floor	Type of Apartment	Type of BHK	Carpet Area (sq.ft.)	Balcony Area (sq.ft.)	Built-up Area (sq.ft.)	Terrace Area (sq.ft.)	Chargeable Area (sq.ft.)
1st	A	3BHK	777	35	913		1,196
	B	2BHK	581	37	701	157	1,075
	C	2BHK	569	30	687	157	1,057
	D	2BHK	539	29	650		851
	E	3BHK	681	31	805		1,054
	F	3BHK	694	30	820	105	1,179
	G	3BHK	688	30	813	105	1,170
Typical to 15th	A	3BHK	777	35	913		1,196
	B	2BHK	581	37	701		918
	C	2BHK	569	30	687		900
	D	2BHK	539	29	650		851
	E	3BHK	681	31	805		1,054
	F	3BHK	694	30	820		1,074
	G	3BHK	688	30	813		1,065

2 BHK Homes
3 BHK Homes